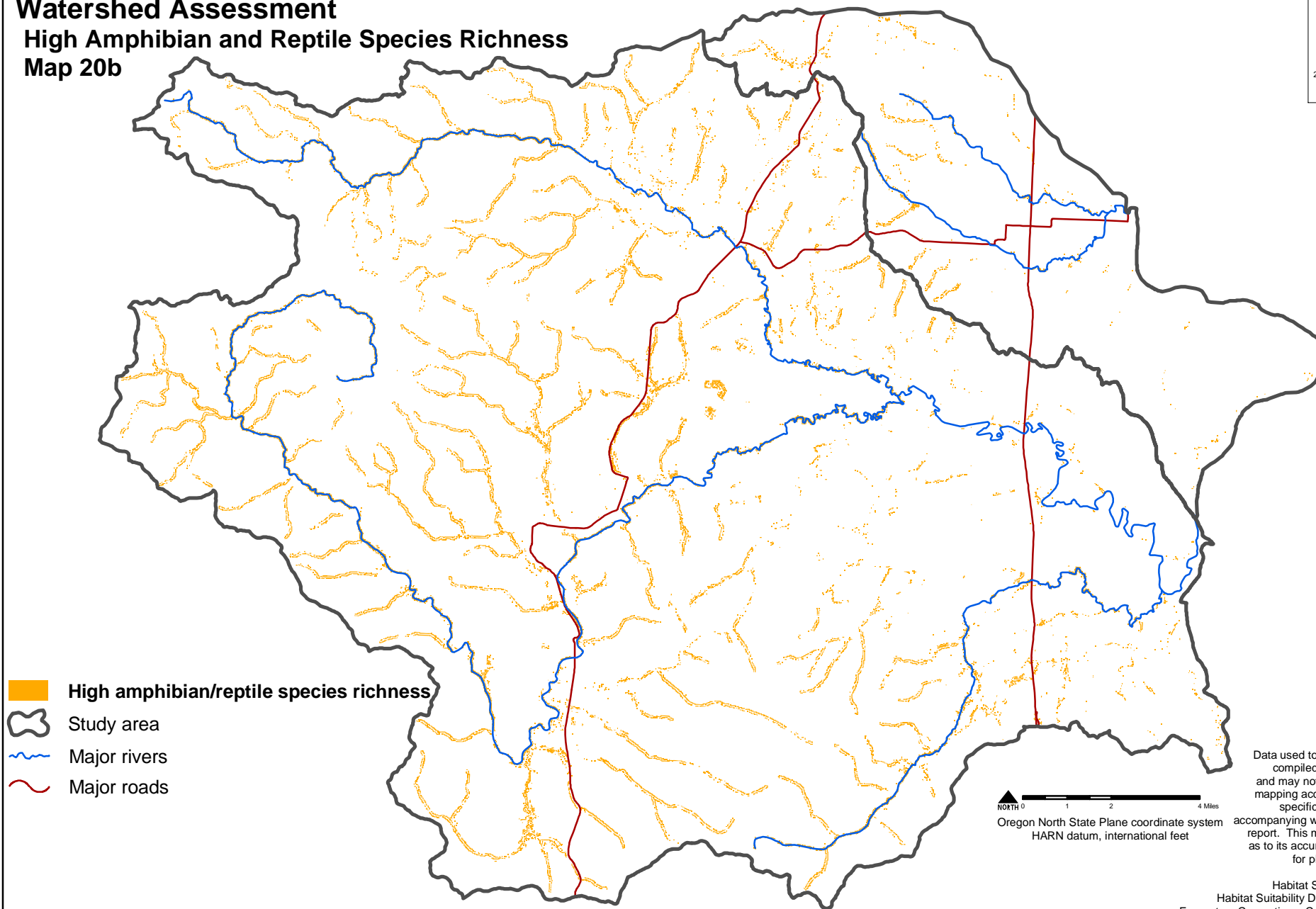



# Luckiamute/Ash Creek/American Bottom Watershed Assessment High Amphibian and Reptile Species Richness Map 20b



230 SW Third Street, Suite 212  
Corvallis, Oregon 97333  
www.earthdesign.com



-  High amphibian/reptile species richness
-  Study area
-  Major rivers
-  Major roads

 NORTH  
0 1 2 4 Miles  
Oregon North State Plane coordinate system  
HARN datum, international feet

Data used to create this map were compiled from multiple sources and may not meet federal or state mapping accuracy standards. For specific data sources see the accompanying watershed assessment report. This map has no warranties as to its accuracy and is to be used for planning purposes only.

Habitat Suitability Data Source:  
Habitat Suitability Data. Pacific Northwest  
Ecosystem Consortium. Contact: Haggarty, Patti  
(US EPA, Western Ecology Division).  
(<http://www.fsl.orst.edu/pnwerc/wrb/access.html>)